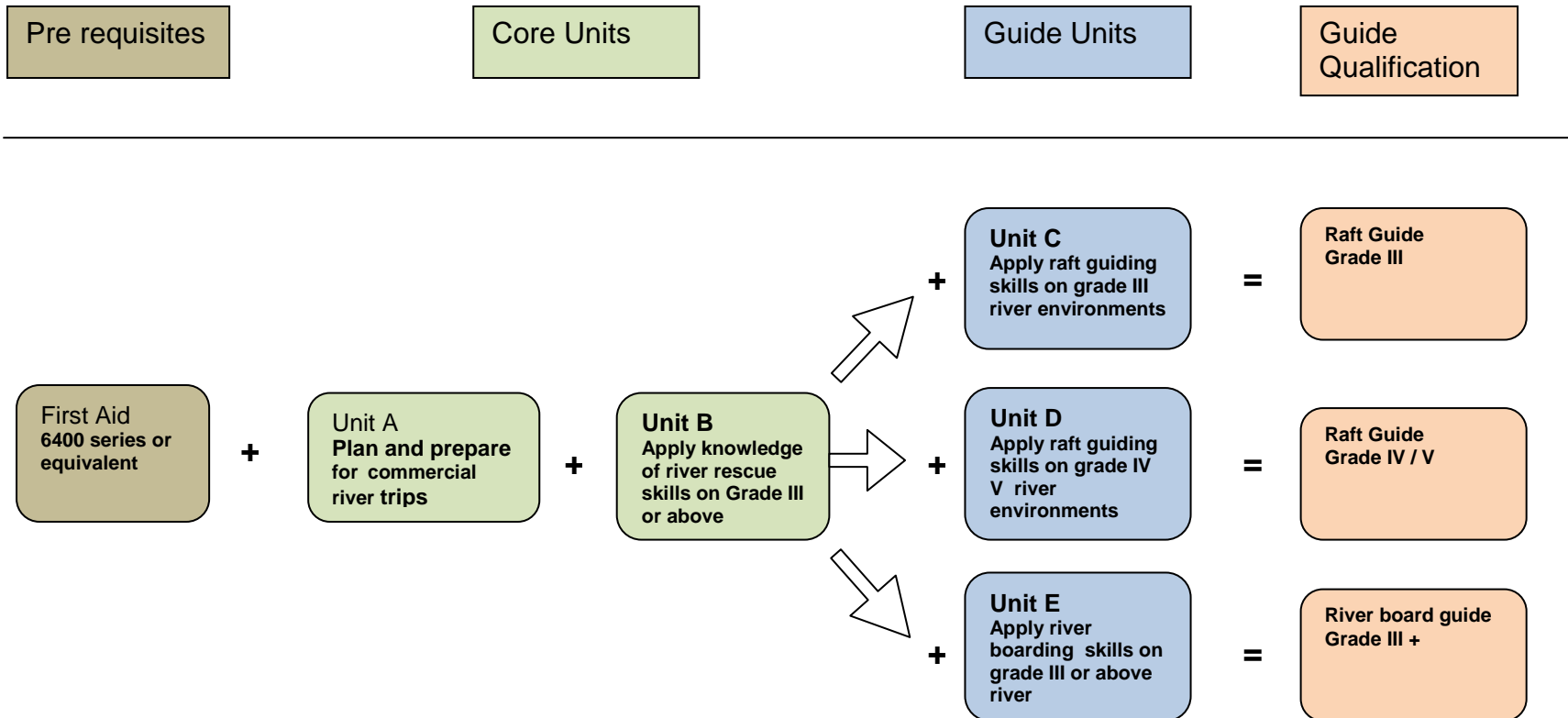
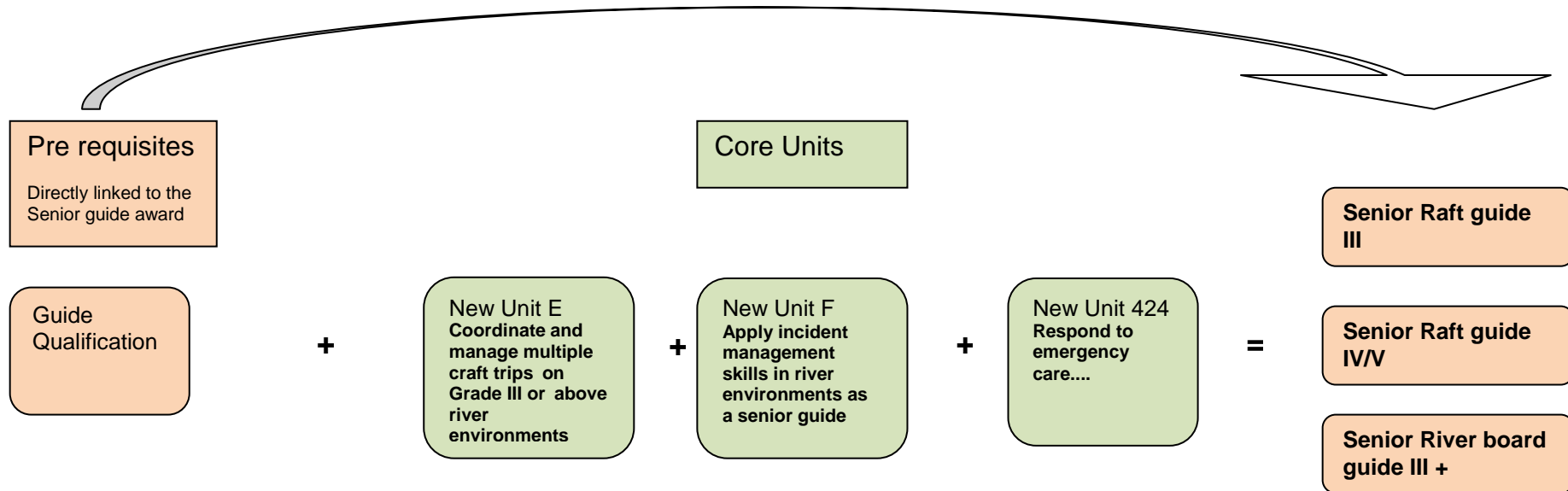


# Proposed River Guide Qualification Structure



# Proposed Senior River Guide Qualification Structure



Unit E *Coordinate and manage multiple trips*, will be assessed in any river guide discipline or river grade. However performance criteria 3.6 is discipline and water grade specific and will be assessed in the context of the senior guide licence under assessment.

Unit F will be assessed in the discipline and grade of water in-which the senior licence is to be awarded, and which must be the same as the guide qualification held.